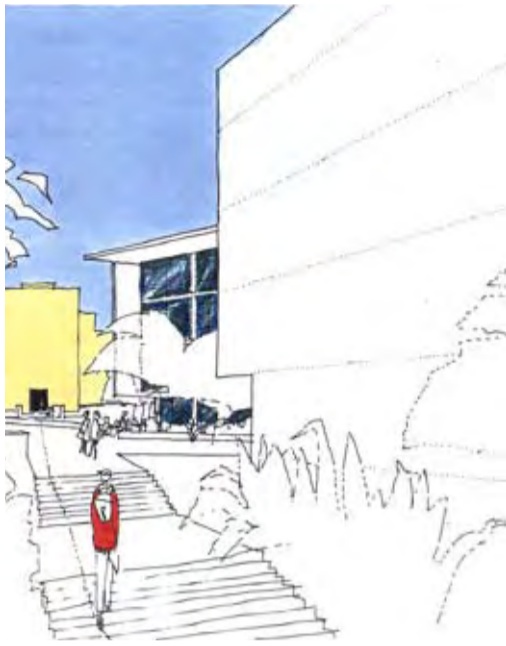


URBAN PLANNING CONSTRUCTION MANAGEMENT LANDSCAPE PROPERTY ARCHITECTURE

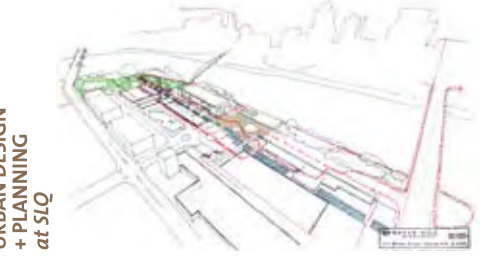
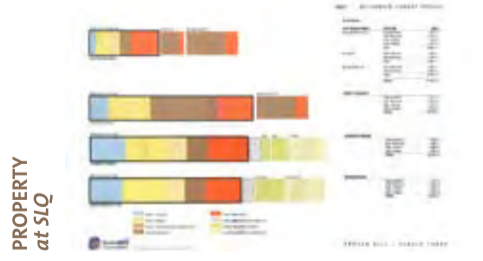
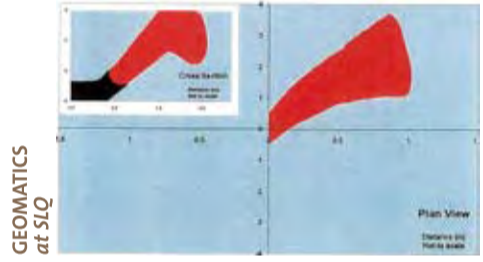
A revisiting of site's potential gave a warrant to this scheme. Our familiarity with construction technique enabled a relatively finessed insertion on a regular budget.

METHODS



We link our models with engineering analysis so that the Virtual Building can be fully simulated, not just represented.

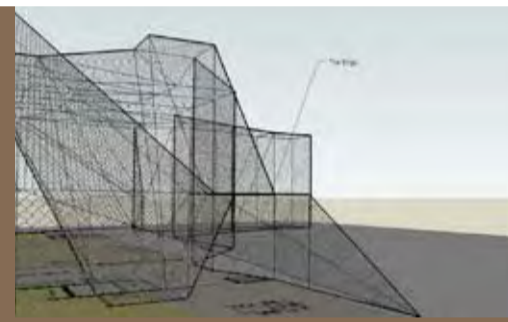
For this project we propose to offer our virtual model for research and education. This means access to our digital content through design and construction to be then used as a resource over the life of the building. This will also apply to any extended services we offer from our modelling approach that can be matched to each of your professional strands.



UQ General Purpose North 3

While the buildings spaces and places are memorable, the real benefits of the scheme are conferred to the surrounding campus where more recent development has been enabled since GPN3 became part of the original university's new gate.

ATTRIBUTES



Queensland College of Art

A not very successful scheme has its heart in the right place... The students and the adjacent urban realms seamlessly share their ground plane and prospect.

Dan as Dr Forsight

Imagine the faculty as a kind of 'post-institutional platform for discourse around architecture, urbanism, landscape' ... having the university as a facilitator of those kind of events would be key, so shaping space and services to allow this to happen gives the faculty a deeper dimension.

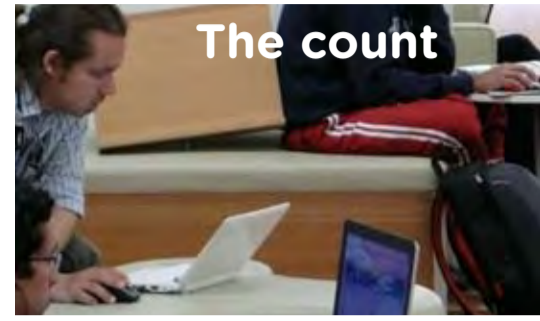
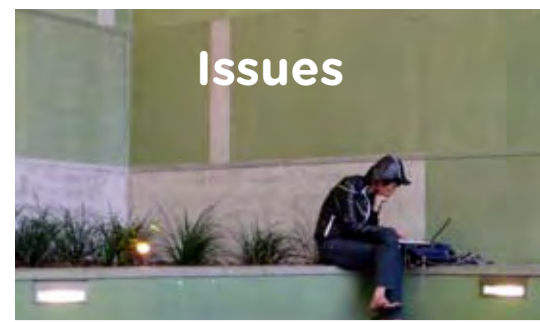
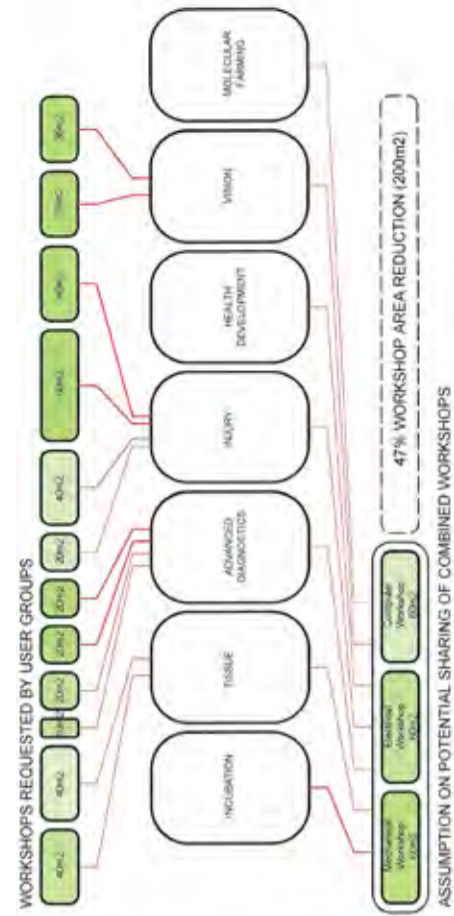
1. BUILT PEDAGOGY

Activating/connecting campus community | Regular discussions exhibitions/displays | Visible processes | Best of each profession | Advanced construction/structural/servicing natural + built integrated | Outstanding urban design

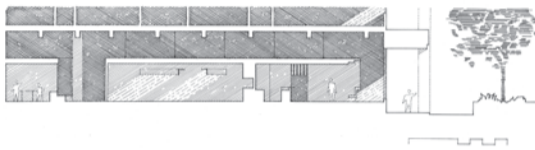
Years of workplace design again emphasise the large consequences of seemingly small things. Role playing, physical trialling, continuous involvement, 'rewards for change', bottom up consultation... Every move that can be made towards the users is worth the effort. From the outset it is important to cocurrently run interest in the **collective spaces, since the overall experience of the workplace relies on these spaces** even though the natural tradactory is towards personal space.

Inclusion of the users at every possible stage of the procurement enabled fine tuning and **positive engagement in the workplace design.**

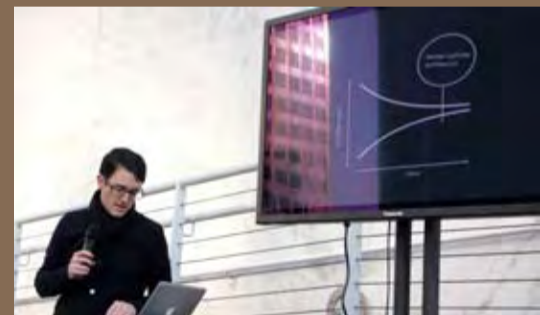
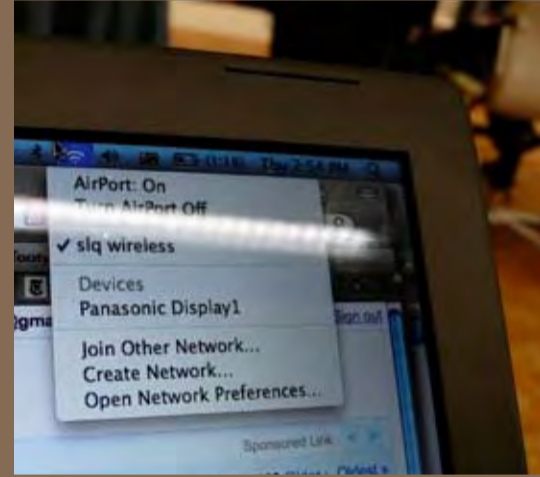
Comparison of spacial demand with use patterns.



METHODS



EXPERIENCE



Grant Thornton Meeting Suite

ClarkeKann Office Fitout

QUT Institute of Health + Biomedical Innovation

Dan's SLQ Post Occupancy Evaluation

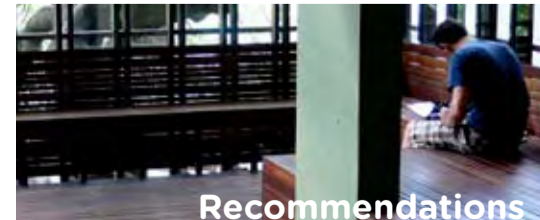
This accounting firm has a similar staff number to the faculty. It is their suite of shared spaces that differentiate their workplace from their peers. The enjoyment of these spaces is directly and **measurably linked to staff retention and satisfaction.**

The ultimate exercise in champagne tastes on a beer budget; highly corporate legal fitout at ordinary industry rates. Fashioning of individual work spaces within a very typical business building proved possible and successful

Support from management was required from the outset until well into the post occupancy phase for the full potential of flexible working places to be realised.

The formalities of post occupancy evaluation can be constructively deployed in other projects.

ATTRIBUTES



2. THE ACADEMIC ENVIRONMENT
Inspiring work environment from quiet to collaborative flexible work styles attracting good staff.



Donovan Hill's **recent travel in the US** to specifically experience first hand the **latest iterations of teaching/learning space** will be utilised as a reference and as a resource.

Dan's resourcefulness as a researcher and communicator is being constantly refreshed through travel, convening, participation and **publication**.

'The Street as Platform', in 'Best of Technology Writing 2008', edited by Steven Johnson (Yale University Press, forthcoming 2009)

'The Adaptive City', in 'Urban Play', Droog Design, ExperimentaDesign Amsterdam (2008)

'Loam for civic creativity', chapter in 'Actions: What can you do with the city', Canadian Centre for Architecture, Montréal (2008)

Adaptive design, interaction design and learning from architecture in 'Designing for Interaction', Dan Saffer (New Riders, 2006),

'Adaptation, Personalisation and Self-centred design', in UK Govt. report 'Innovation through People-Centred Design' (2004)

'Cottonopolis and Culture: Contemporary culture and structural change in Manchester', City journal (1997)

METHODS



TeamSpot



Meeting rooms
Informal Learning Spaces

Unlock the power of real-time group collaboration. Designed with small groups in mind, TeamSpot creates high-performance meeting places that accelerate team performance.

Up to 10 users

Class Spot



Interactive Classrooms

Create interactive classrooms students love. ClassSpot redefines "smart classrooms," delivering flexible, engaging learning spaces where students and faculty work together freely.

Up to 40+ users

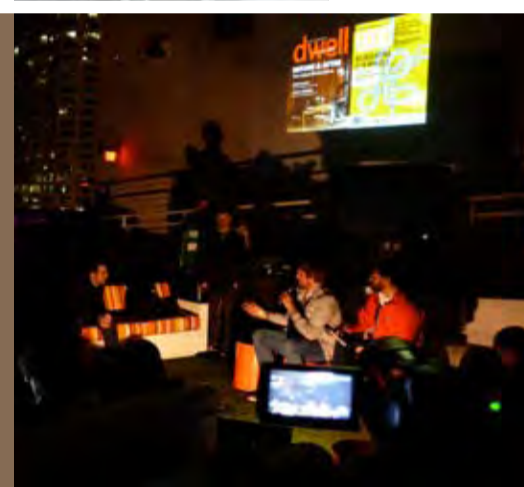
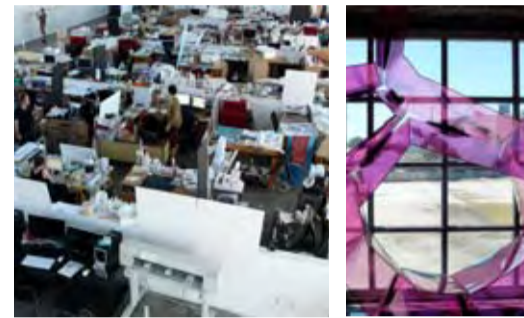
ClassSpot PBL



Project-Based Learning Studios / Classrooms

Build flexible environments that blend teaching and teaming. ClassSpot PBL supports project-based learning pedagogies where students work on team projects to situate their learning.

Up to 40+ users



EXPERIENCE



Timothy Hill in Studios at Large

Experience indicates that various approaches are required for various situations.

University of Queensland School of Architecture

An under resourced school puts the pressure on flexibility. As in libraries, **furniture plays a critical role** in enabling this flexibility... An aspect that facility managers may not be convinced by.

Donovan Hill Studio

Our own studio is constantly evolving. Slight gradients of transparency make a big difference to experience and performance... Transparency to itself, transparency to our clients and transparency to our setting count a great deal.

Postopolis with Dan

The press say: "Postopolis! is probably best described as a conference on steroids — a live, five-day blogathon of back-to-back discussions, interviews, panel talks, scheduled and unscheduled guests, slideshows, films and parties. Hosted by some of the most innovative and influential architecture and art bloggers, who have one thing in common: **they are changing the way we think about landscape, architecture and cities.**"

It has featured in Icon, Architect, Metropolis, Princeton Architectural Press, Los Angeles Times etc. Postopolis! NYC featured Lebbeus Woods, Paul Seletsky (SOM), LOT-EK, Mark Wigley, Matt Clark (Arup), Local Projects, Aranda/Lasch, Tobias Frere-Jones and others. Postopolis! LA featured Jeffrey Inaba, Christian Moeller, Ball-Nogues Studio, Stamen, Johnston Marklee, XTEN, Steve Roden, Christopher Hawthorne, the Chief of Counter-Terrorism for the LAPD, amongst others.

ATTRIBUTES

3. THE DESIGN STUDIO

Studio based informal to formal 'achiomical theories' of classroom design (tech, furniture, equipment) immersion in culture.

This large and sensitive building is conditionally very uptight; nil UV to laboratories, massive energy demands and numerous atypical services. Our approach required our client, our consultants and ourselves to comprehend a planning strategy that emphasized 'unevenness'... The singular building simultaneously carries a super protective outer shell and a delicate but generous inner garden. The susceptibility of the write up space to the garden contrasts dramatically with the filtered lab space.

Critical to producing a 'Living Building' is gearing for an aligned management system; living buildings need not only day to day attention but long term financing and subscription. Authoring the systems for the naturally lit and aspirated core operation of this building (with AEC/Lincoln Scott) was one aspect, the other aspect to ensure the **clients willingness to look after a building**, which varies in conditions and which relies on adjustable operation to achieve comfort, ambiance and energy savings.

One of the most successful sustainability techniques which Arup has applied to projects of a similar size and scope to the proposed Faculty of Architecture, Building and Planning building is Arup's SPeAR® (Sustainable Project Appraisal Routine) tool. SPeAR® seeks to provide a structured process for planning, assessing and reporting on sustainability in its most holistic sense by addressing issues of environment, natural resources, society and economics.

The key output of a SPeAR® appraisal is a SPeAR® diagram, such as the adjoining example. The diagram provides a graphic illustration of the **diverse issues that may be considered when assessing the sustainability** of a project. SPeAR® appraisals can highlight where a project performs poorly in terms of sustainable principles and areas which require optimisation, or where the balance between positive and negative needs to be investigated in more detail.

Arup are able to assist the University of Melbourne by:

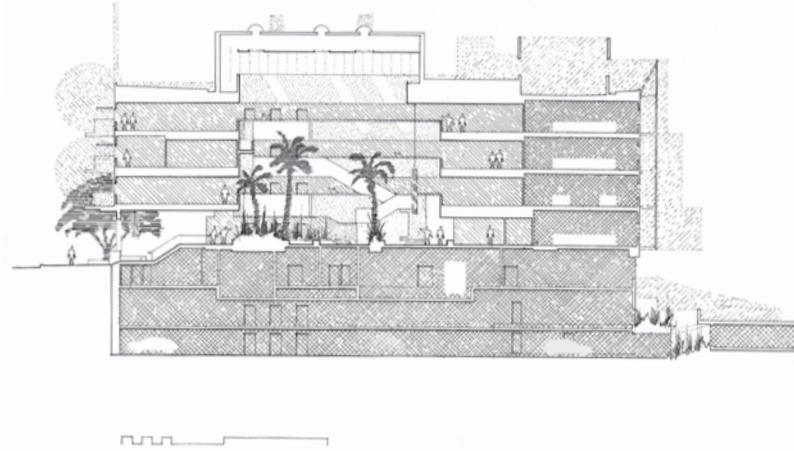
Defining sustainability for the University of Melbourne and the architectural design of the ABP new building;

Planning and designing for sustainable outcomes across a multidisciplinary project team;

Supporting the achievement of environmental performance aspirations;

Assessing and informing sustainability aspects of design and ongoing performance; and

Communicating sustainability.

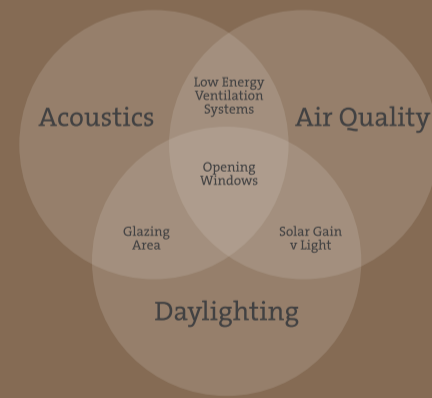
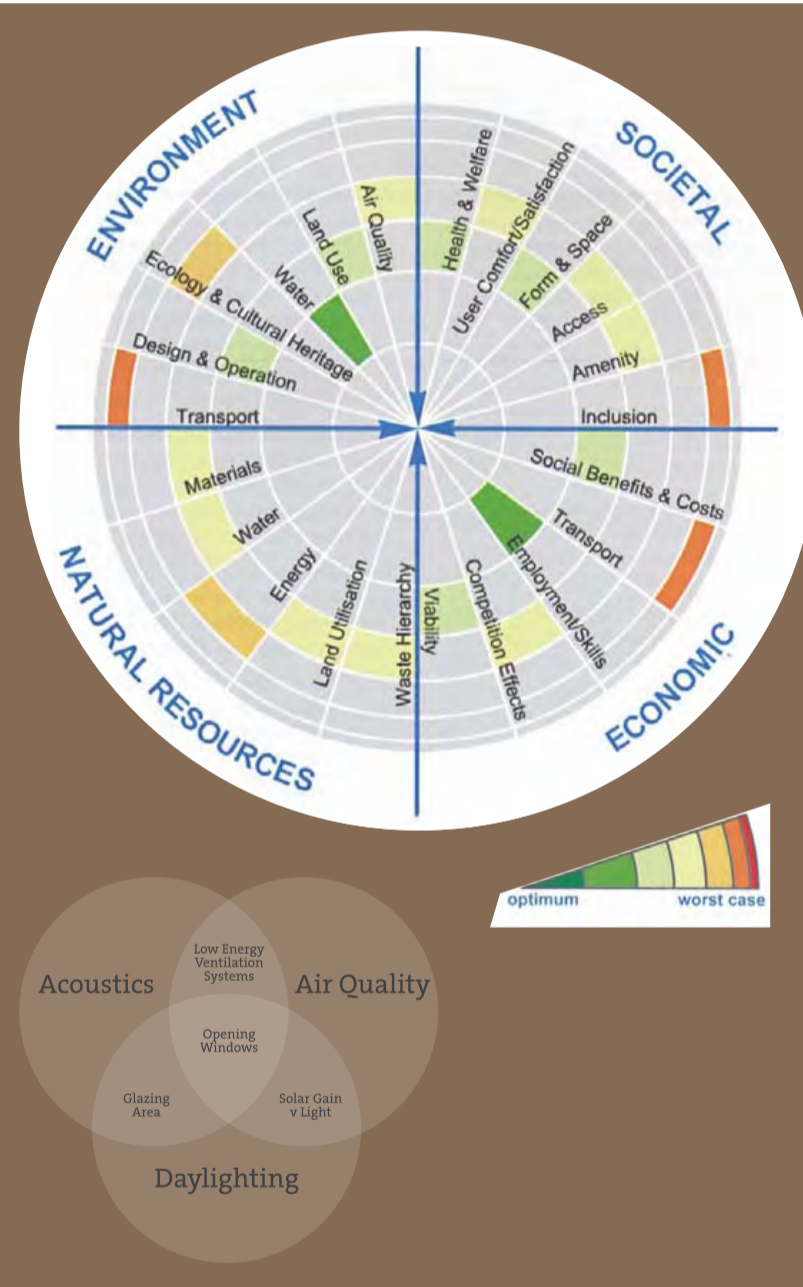


SPeAR®

METHODS



EXPERIENCE



Translational Research Institute

QUT Institute of Health + Biomedical Innovation

An Arup tool

Documentation (in association with Wilson Architects) is concluding. The 24 hour equitably accessible garden should serve as a respite for the generally grim Princess Alexandra Hospital campus.

Teething problems did tend to emphasise that the building was to an extent... an experiment. Tuning has been very successful.

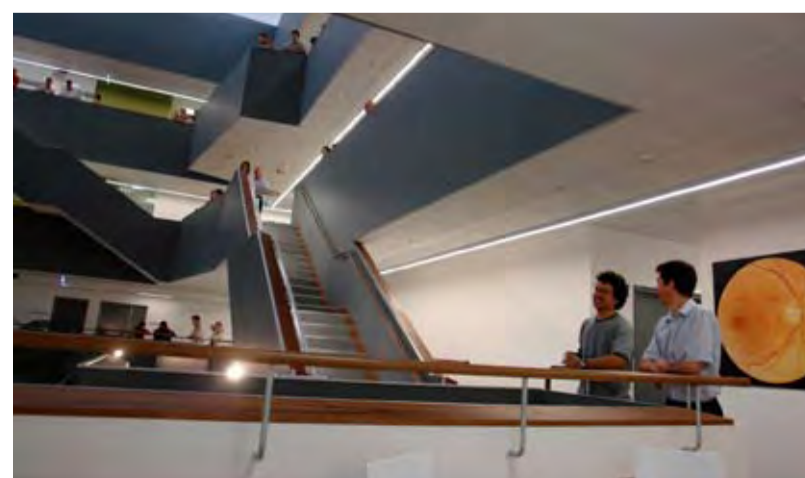
In a number of recent UK education facilities, key issues similar to those here in Australia have been successfully resolved as follows:

With the increased use of IT, effective comfort strategies are harder to achieve. Significant effort and accuracy is to model seasonal performance to ensure spaces remain within prescribed temperature and CO2 limits.

There is a proven link between good levels of daylighting and learning. The challenge is whether this can be achieved uniformly across the floorplate, as opposed to only at the perimeter. The added benefit is to reduce energy consumption and carbon emissions. To integrate a successful daylight strategy without adding to the overheating challenge also requires analysis and modelling.

Arup have the distinction, with a fully multi disciplinary orientation, of being able to cover not just the building related issues of sustainability but also strategic sustainability which will be a key issue in positioning the School of Architecture, Building and Planning in the international spectrum.

We can draw on our **global expertise and networks to establish current practices and trends that may affect outcomes for the Faculty.**



ATTRIBUTES

4. THE LIVING BUILDING

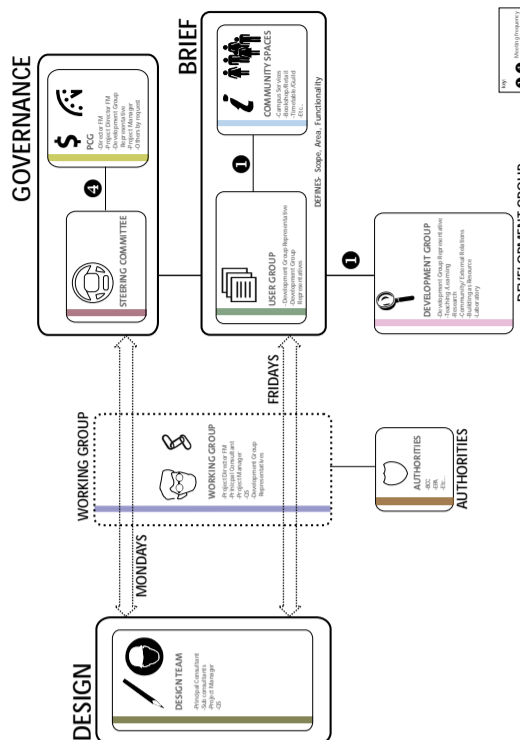
Advanced operative environmental systems sustainable material, energy, air, water act as a lab | Reactive

www.donovanhill.com.au Designer Donovan Hill
www.cityofsound.com Collaborator Dan Hill ARUP

Negotiation can make significant differences in large scale buildings that are subject to multiple compliance regimes. A new laneway, an accessible curb in a landlocked site, and an optimised envelope were features that benefit the city in addition to supporting the viability of the project.

Familiarising with ubiquitous construction systems enables an architectural yield that is often presumed to be unavailable in larger buildings.

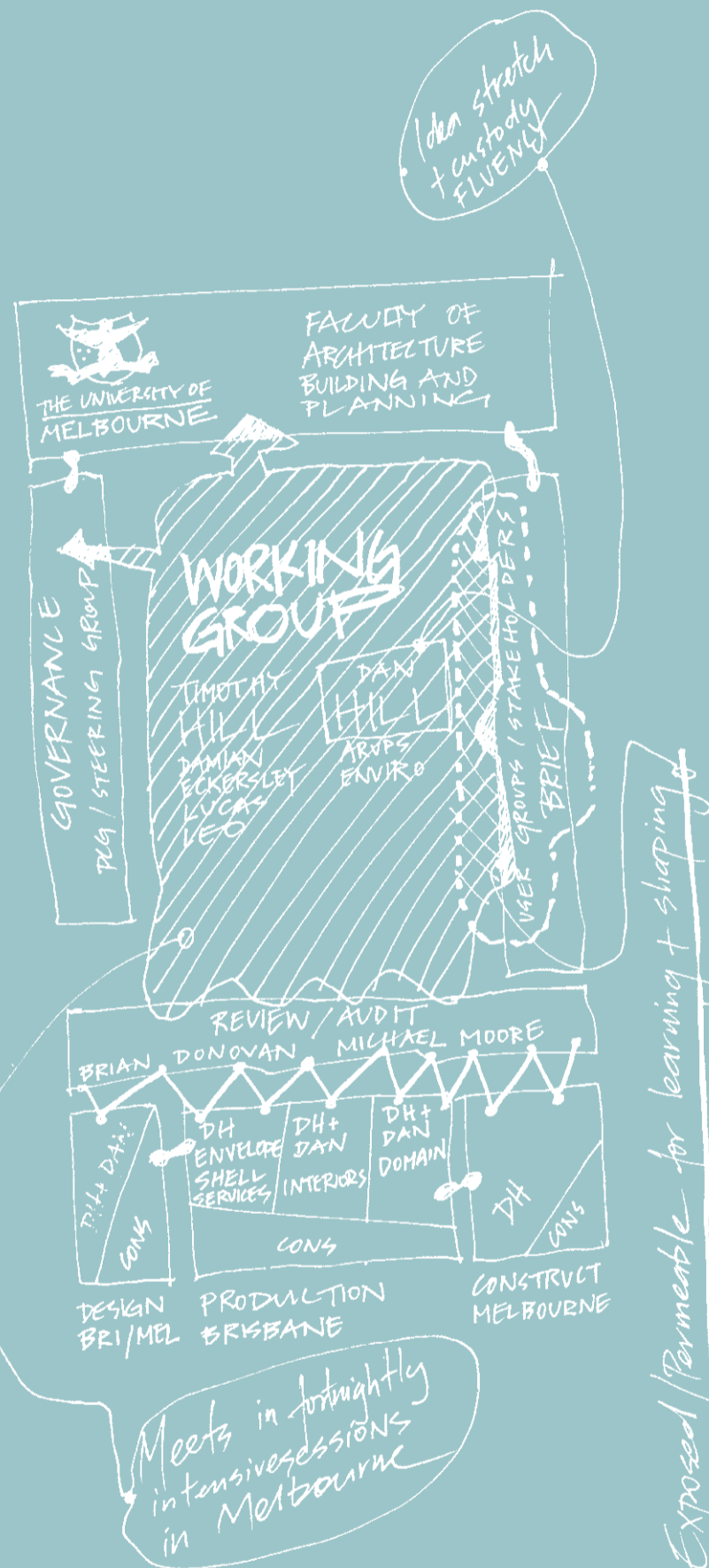
Architect's role commenced with **designing a process and critical reference tool** to broker institutional embrace of contemporary 'world lead practice' teaching and learning models.



Many of our better projects have an associative aspect. By including Dan Hill as a collaborator (innovator, futurist, roving researcher, practiced communicator, filter, reflector and international linkage builder) we can fully amplify the benefits of our combined 'un Melbourness'... Internationally edged Australian savyness.

Both Dan and ourselves are jointly intrigued by the way your brief calls up 'habitation' as an over arching value.

We typically use 'events' to focus the efforts of clients, stakeholders, consultants and ourselves using charlotte/workshop compression sessions. Even when travel is not involved we find it a constructive method... two solidly active encompassing days equal two months of two hour weekly meetings.



METHODS



EXPERIENCE



ATTRIBUTES



Northbridge Office Tower

\$125m worth of Green Star 6 office building, currently practically complete. Embedding the carpark in a land locked site and refining the cladding system to enable construction from the interior, accelerated construction time.

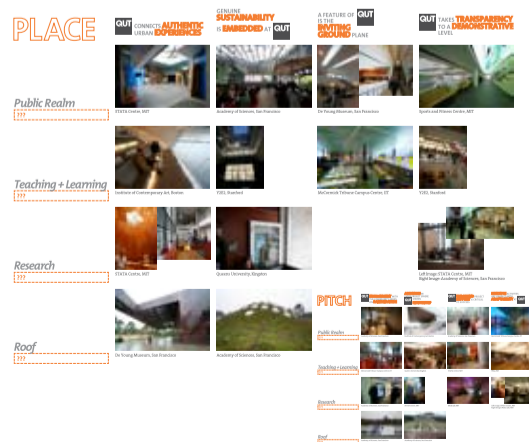
AM60 Office Tower

\$85m building due to complete in June. Green Star 4.5



QUT Science + Technology Precinct + Community Hub

Campus is re-arrayed to yield permeable ground plane and participatory civic edge. \$175m project currently in Schematic Design (in association with Wilson Architects).



5. CAPABILITY AND PROCESS

Process for engaging with client | Demonstrate size, scale, type, budget | Melbourne delivery

BRIAN DONOVAN

Donovan Hill

Brian's ongoing experience as a partner and project director continues a 12 year history of involvement as a designer on major projects, including work in the late eighties in Japanese cities in the studio of Atsushi Kitagawara.

The efforts are deliberately unspecialised, ranging through memorials, the Brisbane City Centre Master Plan, landscapes, commercial office towers, laboratories and in a continuous stream over 15 years... houses.

His work on the Brisbane City Centre Draft Master Plan sets the strategic direction for the future development of the city, identifying the processes and major initiatives that will help to achieve this vision. It provides the foundation for a new local plan and promotes implementation through demonstration projects.

MICHAEL MOORE

Donovan Hill

Michael's quiet demeanour is lethal - lack of apparent fuss can lull others into imagining every detail, prospect of mis-co-ordination or procedural expediency might not be noticed, but then comes the reminder. This is why Michael's partnership in the firm centres on his custodianship of our production methods.

His involvement with the Institute of Health and Biomedical Innovation project extended from the initial stages of brief development and conceptual design through to documentation and construction stages.

DAMIAN ECKERSLEY

Donovan Hill

Damian's contributions have had a very dynamic character, often acting to facilitate others in addition to advancing his own capacity. Thus his seniors have been liberated to diversify their responsibility and his juniors have learnt not only about the practice of architecture but also about the ethos of the office.

His efforts take a rare form, his capacities have such breadth that it has assisted others in becoming specialised. Damian's competency with 'pure' design, team management, technical resolution, client communications, the list continues, has enabled others to clarify their own interests or strengths.

TIMOTHY HILL

Donovan Hill

Timothy established Donovan Hill Architects with Brian Donovan in 1992 specifically to focus on offering Architectural Services that stress design as the significant factor in development. His experience as a partner and project director continues a history of collaborative design activity.

In addition to guest speaker appointments at Australian universities, the Australian Institute of Architects, and industry group forums. He has been a panellist in assessing urban schemes for the cities of Tripoli, Perth, Melbourne and Brisbane.

Recent public space focussed projects include the State Library of Queensland, redevelopment of QUT's urban campus, and two new city office towers with repaired laneways.

DAN HILL

Arup

Dan has an experience of product development in design and innovation applying to sectors ranging from media and urban planning to city government and academia, as well as a background of academic research and practice in urban renewal through creative industries and urban ICT.

He has conducted significant strategic work as one of the key architects of the British Broadcasting Corporation, as well as leading design across their web sites and services. He cofounded both Monocle magazine and the acclaimed architecture and urbanism conferences Postopolis! in New York and Los Angeles. He also runs City of Sound, a leading architecture and urbanism websites.

City of Sound



EXPERIENCE

Arup (2008-)

Global leader of Informatics Design in the Virtual Design Skills Network, based in Arup's Sydney office.

November 2008, 2-week masterclass for University of Technology Sydney's Master of Digital Architecture degree, around urban informatics and data visualisation.

Mentor to students on the Central Saint Martins masters degree in Narrative Environments (London).

Masdar city centre (Abu Dhabi);

Barangaroo/Green Square (Sydney);

EcoMap project, Cisco (San Francisco);

Strategic foresight, urban informatics and architecture, Powerhouse Museum (Sydney) and State Library of Queensland (Brisbane);

ICT and urban sustainability agenda report, State Government (New South Wales);

Strategic direction, design and development, The Edge digital culture centre (Brisbane);

Strategy for sustainable transport corridor (Melbourne)

Monocle

A key member of the launch team for the internationally acclaimed magazine, Monocle, "a global briefing on affairs, business, culture and design", with particular emphasis on urbanism. (London and Sydney) 2007 - 2008

British Broadcasting Corporation

'BBC 2.0' and 'Creative Future: Beyond Broadcast' programmes, defining the creative and strategic direction of the BBC to 2015. (London) 2001 - 2007

Urbis Museum Curator/Producer for, Manchester (2001).

Research assistant, Manchester metropolitan University

City of Sound is generally considered to be one of the **world leading architecture and urbanism weblogs**. The blog has featured in The Observer, The Guardian, USA Today, LA Times and Sydney Morning Herald newspapers; Architect, MSNBC, FastCompany, BusinessWeek, Icon, Metropolis, (Inside), Architectural Record, Architectural Review Australia, Architect's Journal periodicals, ABC Radio National, Triple R's The Architects, as well as numerous online publications.

It's a 'featured blog' at the influential Design Observer website and on the UK Design Council and TypePad sites. It was chosen as one of 150 websites to be archived by the British Library in August 2007. International Listings has it as one of the top 10 architecture weblogs, as does Eikonographia for several years running. Planetizen, the primary online urban planning and development network, listed it one of its top 10 planning, design and architecture websites for 2008.

Neveille Bonner building



EXPERIENCE

Queensland University of Technology, Science & Technology Precinct and Community Hub, Gardens Point, Brisbane

Northbridge Office Tower, Brisbane

AM60 Office Tower, Brisbane

Institute of Health & Biomedical Innovation, QUT Kelvin Grove

Brisbane City Centre Draft Masterplan, Brisbane City Council

UQ General Purpose North 3 (in association with Peddle Thorp)

Neville Bonner Building, State Government Offices (in association with Davenport Campbell & Partners and PDT architects)

QUT Institute of Health + Biomedical Innovation



EXPERIENCE

Institute of Health and Biomedical Innovation, Queensland University of Technology (in collaboration with PDT Architects) (\$50M)

Millennium Library Project, State Library of Queensland

Northbridge, Office Tower, Brisbane

AM60 Albert Street, Office Tower, Brisbane

UQ General Purpose North 3



EXPERIENCE

Donovan Hill Offices

NAB Office Tower, Brisbane CBD

State Library of Queensland and surrounding Site Infrastructure Works

Institute of Health and Biomedical Innovation, Queensland University of Technology

General Purpose North 3, University of Queensland

Forgan Smith Forecourt Study Masterplan, University of Queensland

Zelman Cowen Building Refurbishment, University of Queensland, St Lucia Campus

State Library of Queensland



EXPERIENCE

Translational Research Institute Facility, Princess Alexandra Hospital, South Brisbane Northbridge Office Tower

State Library of Queensland (in association with Peddle Thorp)

Neville Bonner Building, State Government Offices (in association with Davenport Campbell & Partners and PDT architects)

UQ General Purpose North 3 (in association with Peddle Thorp)

Creative Director 'Departure Lounge, 2007 National RIAA Conference, Melbourne, April 2007

Keynote Speaker, Jury Critic & Judge 'Superstudio 2007', SONA Student Competition, QUT Brisbane

Keynote Speaker & Workshop Participant 'Strategies' & 'Role of the Architect: As a Citizen', Ctrl Shift 07, Wellington New Zealand

Invited speaker at "Eco Edge - Urban Environments or Urban Disasters?", City Edge International Design Conference, Melbourne, February 2005

Invited speaker at 2004 'Light Resource' Vancouver Lecture Series, Canada

AWARDS

'The Sir Zelman Cowen Award for Public Architecture', RIAA National Award 2007

'The RIAA Emil Sodersten Award for Interior Architecture' RIAA National Award 2007

'2007 RIAA FDG Stanley Award for Public Buildings, RIAA State Awards (Queensland) 2007

"...the emergence of a new wave of architects primarily focused and concerned with how buildings (both public and private) best fit within our cities, and within the public realm, rather than as singular objects. The projects are marked by research and intelligence, and represent new building models... In particular we found ourselves looking to projects which exceeded a well executed professional commission; to ones which demonstrated an architectural intelligence regarding either its category type, or wider concerns which transcended the base-line criteria - those projects with intelligent, even ambitious, ideas which also parlay into exemplary architecture... It's a space stubbornly resistant to a specific function, but also full of functional possibilities... It moves well beyond formulaic interior design or ubiquitous corporate space."

Royal Australian Institute of Architect 2007 National Architecture Awards Announced: Victory for Australia's Civic and Public Realms



AWARDS

'Commercial Building' 1999 RIAA National Award

'FDG Stanley Award for Commercial Building' 1999 RIAA State (Queensland)

"Budgets for government buildings are driven by commercial benchmarks, and construction contracts are structured to minimise risk rather than to maximise quality. In many ways the clerical, administrative and bureaucratic functions to be housed are similar to those of private corporations, so why and how should government offices differ from the standards that meet commercial needs? The design of the Neville Bonner Building addresses these issues clearly and imaginatively...Its design combines a deft control of form and space with originality and architectural intelligence to create a public building and related spaces that establish a new and demanding standard to be met by future government developments."

Architecture Australia, May/June 1999



AWARDS

2007 RIAA State Awards (Queensland) 'Commendation Public Buildings

"The space is at once intelligible and enlivened with the views to the outside in both directions. Most research at IHBI is conducted through computer based searches, models and analyses, and the supporting physical laboratory spaces are treated as an adjunct zone behind a separating fire wall. The highly served 'wet' laboratory spaces, are not fetishised as high-tech architecture, but are treated here in a much more low-key manner."

Royal Australian Institute of Architects 2007 Brisbane Regional Awards: Jury Comments



AWARDS

'Building of the Year' 2004 RIAA Regional (Brisbane)

'Subtropical Design Award' 2004 RIAA Regional (Brisbane)

'Commendation - Public Buildings' 2004 RIAA Regional (Brisbane)

"If cities today can no longer hold to their boundaries, if their edges blur and their centres dissolve beyond recognition, then, strangely perhaps, campus precincts can indicate the opposite - retaining in microcosm the essential qualities of a now only dreamed of "ideal" city form."

Architectural Australia, July/August 2003

6. MERIT

'Publications' | 'Reviews' | 'Awards'

www.donovanhill.com.au Designer Donovan Hill

www.cityofsound.com Collaborator Dan Hill ARUP

METHODS

EXPERIENCE

ATTRIBUTES